



# 3SL3ATT®

*Best Solution Lithium Battery*

## THE FUTURE IS LITHIUM



**zero  
maintenance**



**quick  
charging**



**5x  
lighter**



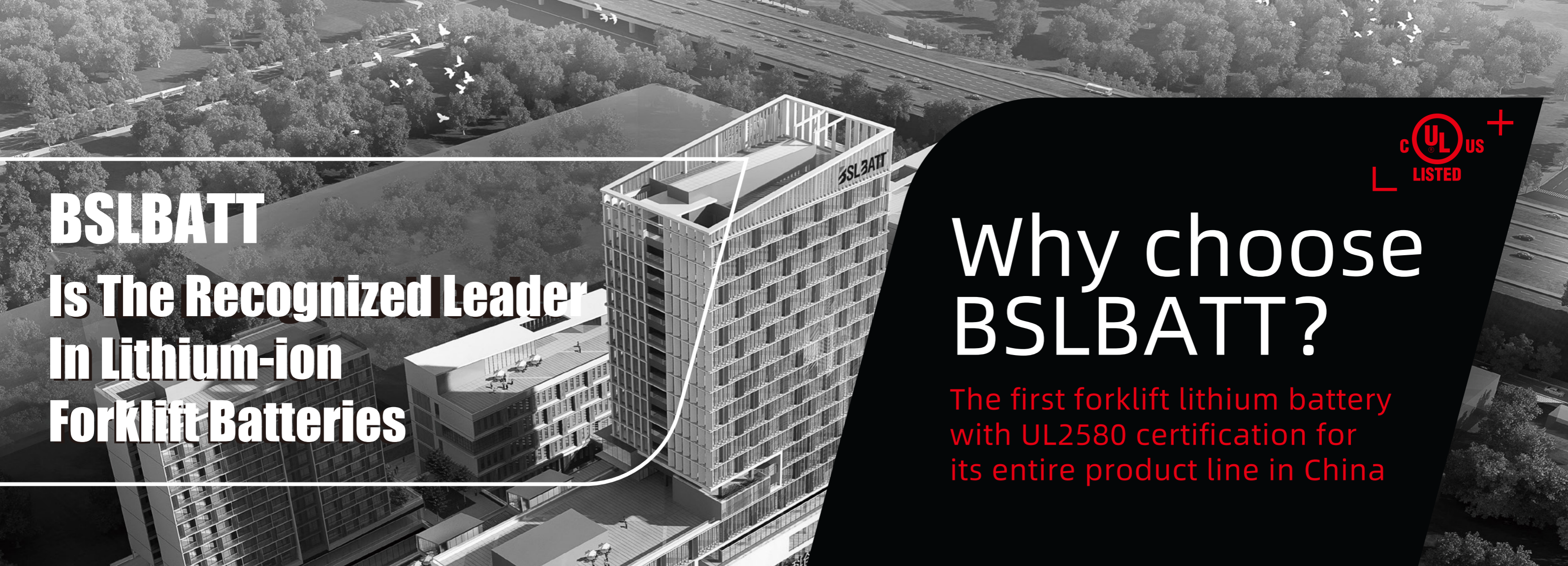
**5 year  
warranty**



**more  
power**







# BSLBATT Is The Recognized Leader In Lithium-ion Forklift Batteries

## Why choose BSLBATT?

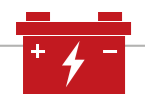
The first forklift lithium battery  
with UL2580 certification for  
its entire product line in China

Best Solution  
Lithium Battery

**B.S.L**



BSLBATT Battery - Industrial established  
2012, and since then became  
A key leader in China's industrial lithium  
battery market



**>40,000  
BATTERIES**

We have more than 40,000 batteries deployed throughout worldwide, and offered the China's first UL-listed lithium-ion battery pack for material handling equipment. Our strong relationships with OEMs and years of experience provide confidence to Fortune 500 fleets.



**CERTIFICATION  
ISO 9001:2015**

BSLBATT batteries are designed and assembled in China in an assembly facility that meets stringent ISO 9001:2015 certification standards.



**Li-Ion**  
Modern lithium battery manufacturers are used in different applications.



**Lead time**  
4-6 weeks, depending on vehicle quantity and customization.



**Certifications**

ISO9001, ISO14001, CE, UL, UN38.3, IEC, TUV, PICC

**ISO 9001**



### About BSLBATT battery

BSLBATT battery is a fast-paced, high-growth (200% YoY) hi-tech company that is leading the adoption of lithium-ion technology solutions. We design, manufacture, and sell advanced lithium-ion battery packs that are disrupting the 100+-year-old market for lead-acid batteries. Our battery packs are used to power industrial and commercial equipment like forklifts and Renewable Energy, as well as new applications like Golf Cart, Floor-Machines, Marine and Mobile Elevated Work Platforms stations.



### BSLBATT Lithium(LFP) Forklift Batteries

The only forklift battery to align actual operation use to specific battery size! A seamless drop-in for electric forklifts at the comparable price of lead acid.





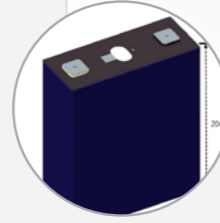
**On track  
for succes  
with  
BSLBATT**



BSLBATT GPRS + GPS  
Cloud Services

In terms of lithium iron phosphate batteries, the cycle life of ordinary lithium iron phosphate batteries is generally 3000-4000 times. Our cell has a cycle life of 3500-4500 times. In addition, some of our cells have a cycle life of more than 6000 times.

**Long Life Span, high To 6000 Times**



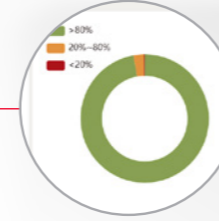
**Discharge Capacity  
≥100%\*nominal**

Battery capacity is one of the important performance indicators to measure battery performance. The actual capacity of our battery under certain conditions (discharge rate, temperature, termination voltage, etc.) ≥100%\*Nominal



**Flexible Copper  
Busbar**

Our Bus bars are customized based on different configurations. our bus-bar is to achieve adequate operating flexibility, sufficient reliability and minimum cost.

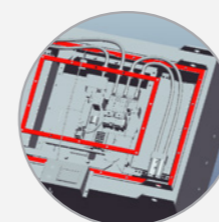


**Remote  
Intelligent BMS**

In terms of lithium iron phosphate batteries, the cycle life of ordinary lithium iron phosphate batteries is generally 3000-4000 times. Our cell has a cycle life of 3500-4500 times. In addition, some of our cells have a cycle life of more than 6000 times.

**Waterproof Structure**

Our battery case is a battery pack that is effectively protected can prevent potentially harmful substances from damaging the battery. And the battery uses a waterproof sealing ring that prevents moisture from passing through.

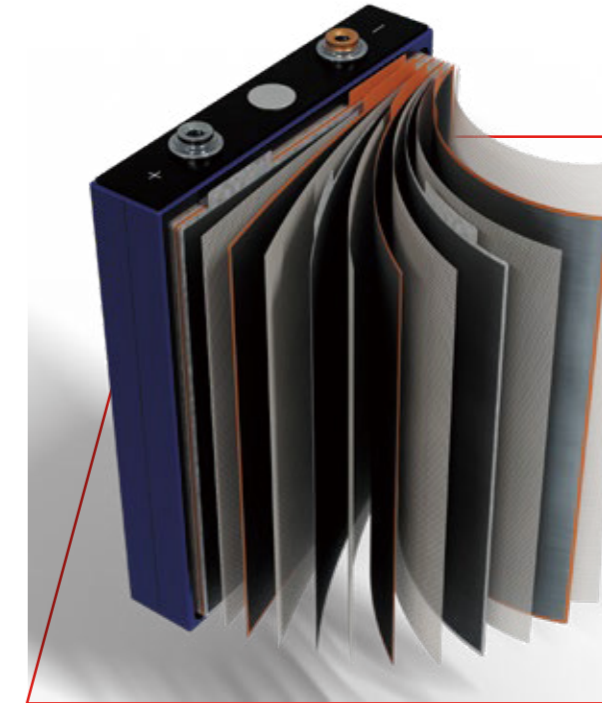


**Maintenance Cover  
Makes Maintaining Easy**

Our battery upper cover has specially designed a maintenance window to facilitate maintenance and inspection, so as to shorten the downtime of equipment maintenance. It can also be uncovered and dissipate heat.

**LFP battery element**

LFP is the safest technology in LI-ION batteries. The BSLBATT LITHIUM battery is made up of LFP cells assembled in a rugged aluminum case that ensures a seal even in the event of mechanical damage.



- The LED material is coated on a metal foil.
- PP-PE-PP three-layer separator with PE or PP in the middle.
- It is composed of lithium salts and anhydrous organic solvents.
- Seal housing with relief valve.

**TIP**

- Touch screen display has three-stage alarm device, high discharge current BMS, GPRS, two-dimensional code scanning, 3000W welding power aluminum strip and low voltage wire harness, ultrasonic welding/aurora welding.
- Relay scheme can resist high current of about 600A.
- The fuse is about 400Amps to 800Amps.

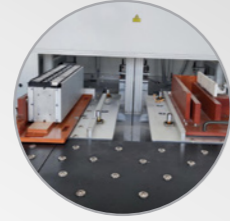
Our A cell is a cell that has no abnormality within the range of technical parameters that meet the national standard or above in all aspects. In fact, all our battery modules are made of A cells. Our capacity, size, internal resistance and other parameters can meet the standard and have excellent performance.



**Brand New Class A Cells**

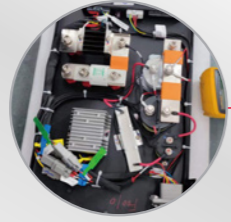
Brand New Class A Cells

The core of the power battery pack is the battery bank. In the manufacturing process of our battery bank, we use high-quality aluminum bus bar, and then use laser welding to seamlessly and perfectly weld the aluminum bus bar and the lug of the cell. As well as the use of aluminum alloy and steel frames, which greatly improves the strength and stiffness of the battery pack. Our module can withstand harsh working conditions and charge and discharge expansion more than ordinary modules.



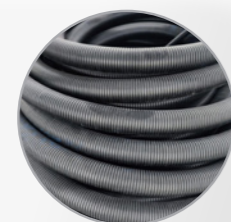
**Reliable Module Welding**

Our PDU integrates BMS main control, charging module, DC module, etc. compared with traditional PDU, our PDU has more vehicle functional modules, which are more integrated in function and more mature in structure. It has heating and other structures. The PDU configuration is flexible, and we can customize and develop it according to customer requirements, which can meet the needs of different customers and different models.



**Integrated PDU**

Our battery case is a battery pack that is effectively protected can prevent potentially harmful substances from damaging the battery. And the battery uses a waterproof sealing ring that prevents moisture from passing through.



**Safety Material  
Insulated and protected with  
flame retardant materials**



## Specifications of batteries for material handling equipment

Model	Technical specification				Discharge current		General			
	Nominal voltage	Nominal capacity	Stored energy	Life cycles	Dimensions (L x W x H)	Weight lbs.(kg)	Continuous discharge	Maximum discharge	Casing material	IP rating
<b>24V system</b>										
B-LFP24-100MH	24V (25.6V)	100Ah	2.56kWh	> 3,500 times	24.6 x 8.1 x 24.7 inch (624 x 207 x 627mm)	467 lbs. (212kg)	100A	200A	Steel	IP65
B-LFP24-135MH		135Ah	3.46kWh		24.6 x 8.1 x 24.7 inch (624 x 207 x 627mm)	467 lbs. (212kg)	135A	270A	Steel	IP65
B-LFP24-230MH		230Ah	5.96kWh		24.6 x 11.2 x 24.7 inch (624 x 284 x 627mm)	635 lbs. (288kg)	230A	460A	Steel	IP65
B-LFP24-280MH		280Ah	7.17kWh		24.6 x 11.2 x 24.7 inch (624 x 284 x 627mm)	635 lbs. (288kg)	280A	560A	Steel	IP65
B-LFP24-300MH		300Ah	7.68kWh		24.6 x 11.2 x 24.7 inch (624 x 284 x 627mm)	635 lbs. (288kg)	300A	600A	Steel	IP65
B-LFP24-405MH		405Ah	10.37kWh		24.6 x 14 x 24.7 inch (624 x 356 x 627mm)	798 lbs. (362kg)	405A	600A	Steel	IP65
B-LFP24-460MH		460Ah	11.78kWh		24.6 x 14 x 24.7 inch (624 x 356 x 627mm)	798 lbs. (362kg)	460A	600A	Steel	IP65
B-LFP24-540MH		540Ah	13.82kWh		24.6 x 16.9 x 24.7 inch (624 x 428 x 627mm)	959 lbs. (435kg)	540A	600A	Steel	IP65
B-LFP24-560MH		560Ah	14.34kWh		24.6 x 16.9 x 24.7 inch (624 x 428 x 627mm)	959 lbs. (435kg)	560A	600A	Steel	IP65
B-LFP24-615MH		615Ah	15.74kWh		24.6 x 19.7 x 24.7 inch (624 x 500 x 627mm)	1131 lbs. (513kg)	615A	1000A	Steel	IP65
B-LFP24-675MH		675Ah	17.28kWh		38 x 13.5 x 30.5 inch (965 x 343 x 777mm)	1624 lbs. (727kg)	500A	600A	Steel	IP65
B-LFP24-840MH		840Ah	21.50kWh		38.2 x 14.1 x 30.6 inch (970 x 357 x 777mm)	1838 lbs. (834kg)	500A	600A	Steel	IP65

<b>36V system</b>										
B-LFP36-300MH	36V (38.4V)	300Ah	11.52kWh	> 3,500 times	37.8 x 13.6 x 30.5 inch (624 x 207 x 627mm)	1640 lbs. (744kg)	300A	600A	Steel	IP65
B-LFP36-405MH		405Ah	15.55kWh		31.4 x 17.3 x 22.6 inch (798 x 439 x 575mm)	1146 lbs. (520kg)	405A	600A	Steel	IP65
B-LFP36-460MH		460Ah	17.66kWh		38 x 13.3 x 30.5 inch (965 x 337 x 775mm)	1649 lbs. (748kg)	460A	600A	Steel	IP65
B-LFP36-540MH		540Ah	20.74kWh		38.1 x 15.6 x 30.5 inch (969 x 397 x 775mm)	2359 lbs. (1070kg)	500A	600A	Steel	IP65
B-LFP36-560MH		560Ah	21.50kWh		38.5 x 18.1 x 30.4 inch (978 x 461 x 772mm)	2597 lbs. (1178kg)	560A	600A	Steel	IP65
B-LFP36-615MH		615Ah	23.62kWh		38.5 x 27.1 x 22.6 inch (978 x 689 x 575mm)	2002 lbs. (908kg)	615A	1000A	Steel	IP65
B-LFP36-690MH		690Ah	26.50kWh		38.3 x 20.2 x 30.5 inch (973 x 512 x 775mm)	2597 lbs. (1178kg)	690A	1000A	Steel	IP65
B-LFP36-840MH		840Ah	32.26kWh		38.5 x 33.8 x 22.6 inch (978 x 859 x 575mm)	3000 lbs. (1361kg)	840A	1000A	Steel	IP65
B-LFP36-920MH		920Ah	35.33kWh		38.7 x 38.5 x 22.6 inch (982 x 978 x 575mm)	3492 lbs. (1584kg)	920A	1000A	Steel	IP65
B-LFP36-1120MH		1120Ah	43.01kWh		44.1 x 43.5 x 22.6 inch (1120 x 1105 x 575mm)	4001 lbs. (1815kg)	600A	1000A	Steel	IP65

For more forklift lithium batteries request, please contact our sales for support .



Combilift forklift Lithium batteries



Large sweeper battery



Heavy-Duty Forklifts



Narrow Aisle Forklifts battery



3-Wheel-Fork lift battery



Walkie Pallet Jacks forklift battery



Electric Forklifts battery

## Specifications of batteries for material handling equipment

Model	Technical specification				Discharge current		General			
	Nominal voltage	Nominal capacity	Stored energy	Life cycles	Dimensions (L x W x H)	Weight lbs.(kg)	Continuous discharge	Maximum discharge	Casing material	IP rating
<b>48V system</b>										
B-LFP48-300MH	48V (51.2V)	300Ah	15.36kWh	> 3,500 times	32.7 x 20.6 x 24.7 inch (830 x 522 x 627mm)	1561 lbs. (708kg)	300A	600A	Steel	IP65
B-LFP48-405MH		405Ah	20.74kWh		32.7 x 20.6 x 24.7 inch (830 x 522 x 627mm)	1561 lbs. (708kg)	405A	600A	Steel	IP65
B-LFP48-460MH		460Ah	23.55 kWh		32.7 x 20.6 x 24.7 inch (830 x 522 x 627mm)	1561 lbs. (708kg)	460A	600A	Steel	IP65
B-LFP48-540MH		540Ah	27.65 kWh		32.7 x 24.8 x 24.7 inch (830 x 630 x 627mm)	1887 lbs. (856kg)	500A	600A	Steel	IP65
B-LFP48-560MH		560Ah	28.67 kWh		32.7 x 24.8 x 24.7 inch (830 x 630 x 627mm)	1887 lbs. (856kg)	560A	600A	Steel	IP65
B-LFP48-615MH		615Ah	31.49 kWh		32.7 x 24.8 x 24.7 inch (830 x 630 x 627mm)	1887 lbs. (856kg)	615A	1000A	Steel	IP65
B-LFP48-690MH		690Ah	35.33 kWh		32.7 x 29.1 x 24.7 inch (830 x 738 x 627mm)	2233 lbs. (1013kg)	500A	600A	Steel	IP65
B-LFP48-840MH		840Ah	43.01 kWh		32.7 x 33.3 x 24.7 inch (830 x 846 x 627mm)	2561 lbs. (1162kg)	840A	1000A	Steel	IP65
B-LFP48-920MH		920Ah	47.10 kWh		32.7 x 37.6 x 24.7 inch (830 x 954 x 627mm)	2561 lbs. (1162kg)	500A	600A	Steel	IP65
B-LFP48-1120MH		1120Ah	57.34 kWh		32.7 x 37.6 x 24.7 inch (830 x 954 x 627mm)	2899 lbs. (1315kg)	500A	600A	Steel	IP65

<b>80V system</b>										
B-LFP80-280MH	80V (80V)	280Ah	23.30 kWh	> 3,500 times	40.4 x 22.2 x 24.7 inch (1026 x 564 x 627mm)	2127 lbs. (965kg)	280A	560A	Steel	IP65
B-LFP80-300MH		300Ah	24.96 kWh		40.4 x 22.2 x 24.7 inch (1026 x 564 x 627mm)	2127 lbs. (965kg)	300A	600A	Steel	IP65
B-LFP80-405MH		405Ah	33.70 kWh		40.4 x 22.2 x 24.7 inch (1026 x 564 x 627mm)	2127 lbs. (965kg)	405A	600A	Steel	IP65
B-LFP80-460MH		460Ah	38.27 kWh		40.4 x 27.9 x 24.7 inch (1026 x 708 x 627mm)	2668 lbs. (1210kg)	460A	600A	Steel	IP65
B-LFP80-540MH		540Ah	44.93 kWh		40.4 x 33.5 x 24.7 inch (1026 x 852 x 627mm)	3214 lbs. (1458kg)	500A	600A	Steel	IP65
B-LFP80-560MH		560Ah	46.59 kWh		40.4 x 33.5 x 24.7 inch (1026 x 852 x 627mm)	3214 lbs. (1458kg)	560A	600A	Steel	IP65
B-LFP80-615MH		615Ah	51.17 kWh		40.4 x 33.5 x 24.7 inch (1026 x 852 x 627mm)	3214 lbs. (1458kg)	615A	1000A	Steel	IP65
B-LFP80-690MH		690Ah	57.41 kWh		40.4 x 39.2 x 24.7 inch (1026 x 996 x 627mm)	3794 lbs. (1721kg)	500A	600A	Steel	IP65
B-LFP80-840MH		840Ah	69.89 kWh		40.5 x 39.2 x 30.9 inch (1028 x 999 x 784mm)	4802 lbs. (2178kg)	840A	1000A	Steel	IP65

For more forklift lithium batteries request, please contact our sales for support .



PALLET TRUCKS



RIDE ON FORKLIFTS



AIRPORT GROUND SUPPORT EQUIPMENT



NARROW ALSLE FORKLIFTS



END RIDER



## Superior Power & Optimal Performance

The latest 4.3 inch magnetic screen



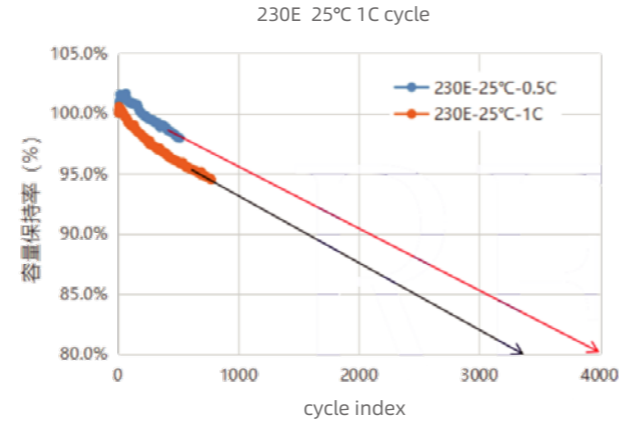
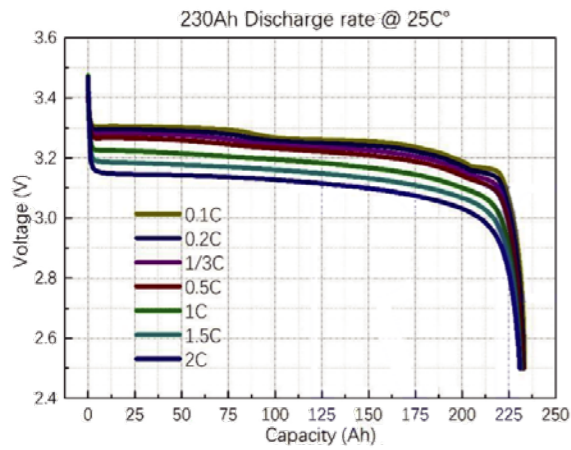
H (High) mode N (Normal) mode E (Economic) mode Turtle mode

The LCD color monitor with 4.3 inch graphic smart display allows the operator to easily and efficiently control the machine. The monitor provides information about speed & accelerator level, steer angle & travel direction, battery discharge indicator, hour meter & working mode. The load indicator displays the load weight and the height of fork in the monitor. The operator can select various performance modes to meet all working conditions. It is available multi-languages (maximum 11) for operator. The monitor also displays information about operation error, system fault, battery level, hour meter plus other various functions. It enables the operator to maintain the forklift in optimum operating condition.

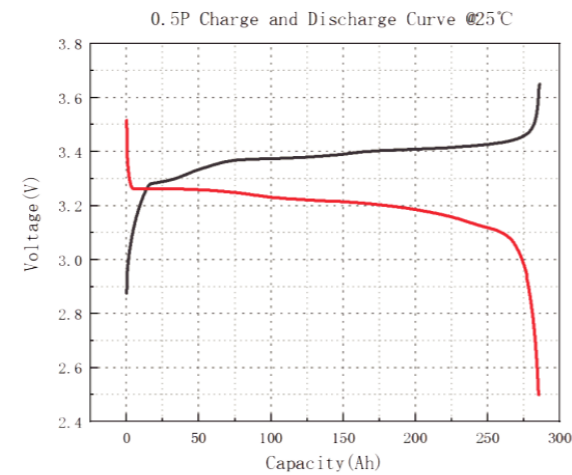


Monitor for load& height indicator

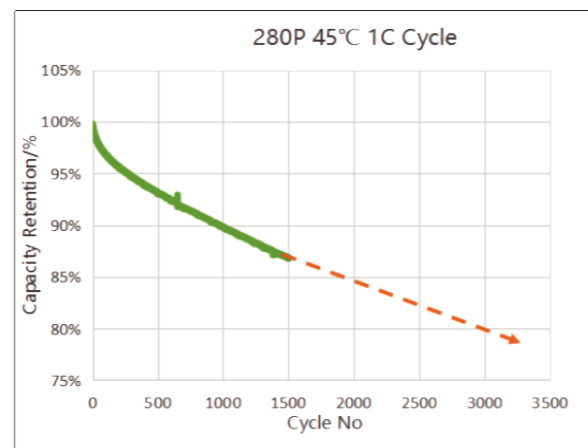
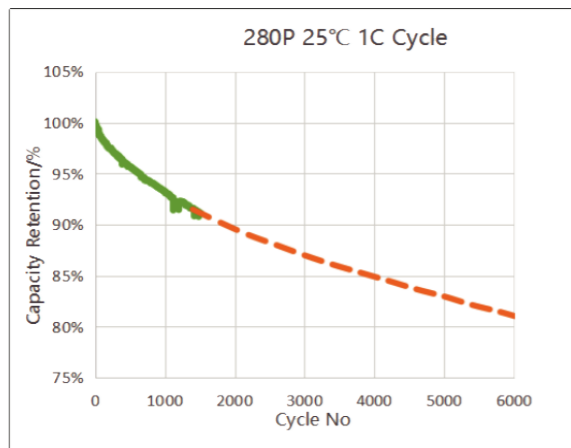
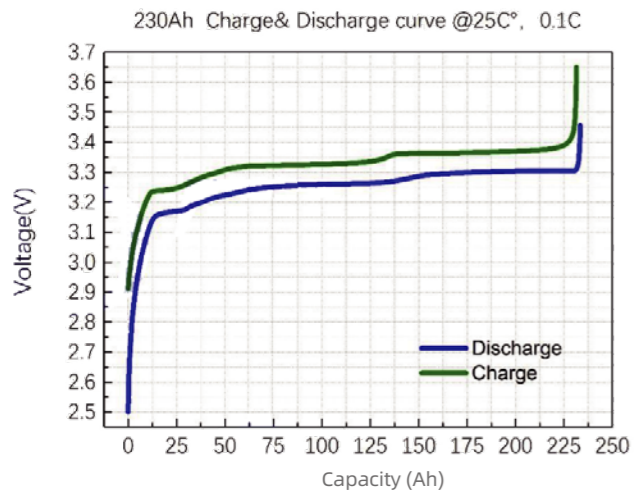
The load indicator displays the load weight in the monitor. The load sensor reduces the time to check loaded weight and the alarm alerts the driver when overloaded. The optional height indicator displays the height of fork in the monitor.



280Ah- Charge and discharge curve



0.5P/0.5P  
Charge Capacity: 285Ah  
Discharge Capacity: 286Ah





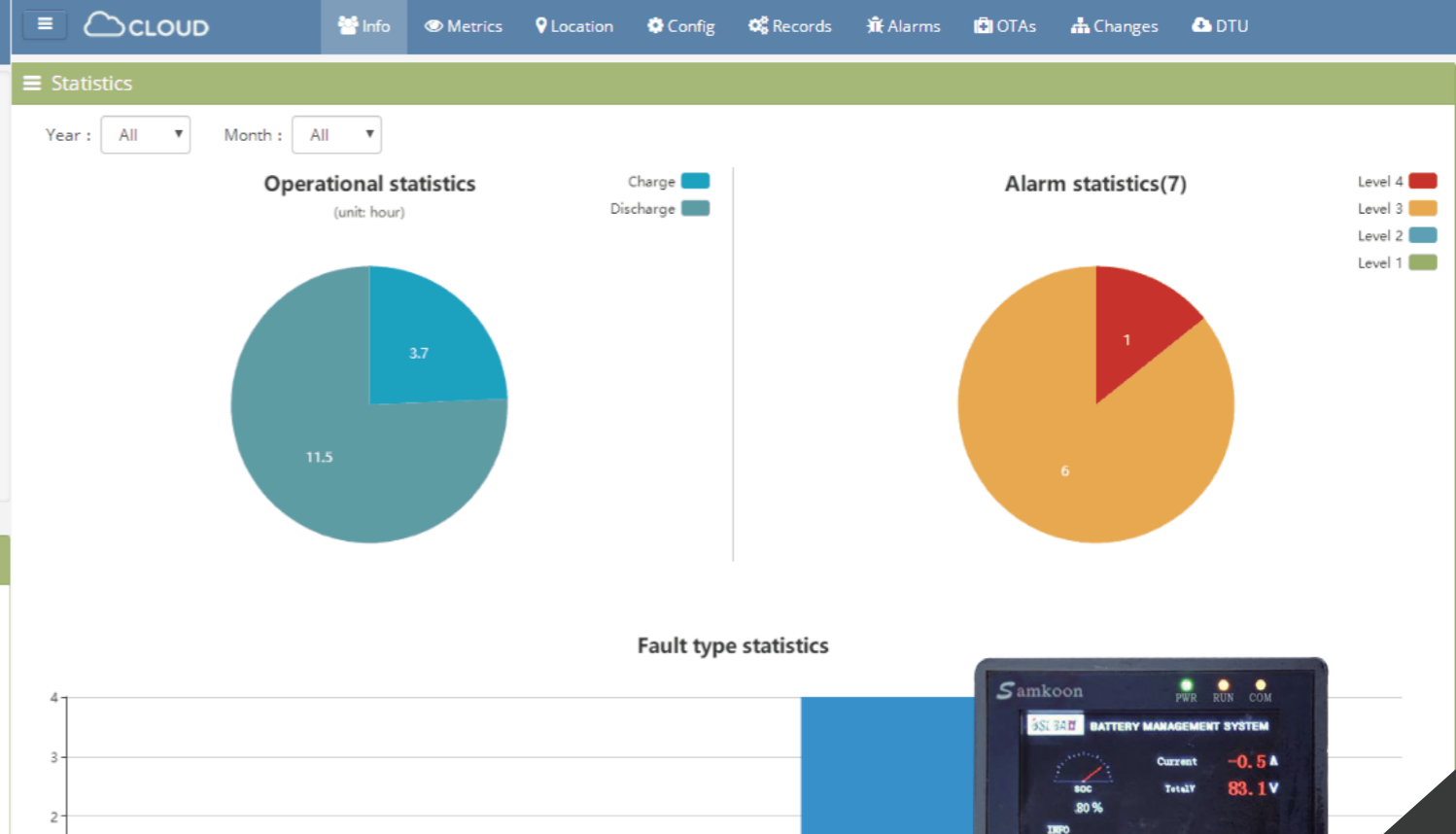
# Display description

- ⚡ The complete information of the console interface is shown in the following figure:
- ⚡ The console displays the interface diagram
- ⚡ Single voltage display interface diagram
- ⚡ Monomer temperature display interface diagram
- ⚡ Alarm information display interface diagram
- ⚡ Screen interface settings display the interface diagram

Sys. State: Offline	
Resis.	65536KΩ
Resis.	65536KΩ
Cell Volts	16
Thermistors	8
Cell Code	13
Thermistor ID	2

Detection	State
HV1	Close
HV2	Open
ScreenPwr	Open
Beep	Open



## 4G module

- Real-time monitoring
- Factory engineers in China, customers from all over the world,

- Can read the data through the Internet.
- Easy to communicate, and fast to analyze and find the solution if the battery has any problems.

Create fleets.  
Monitor each of your batteries:

- (SOC) State of charge
- (SOH) State of health
- Productivity
- Detailed charge/discharge events
- Errors
- Energy usage
- Temperature
- Life cycle



Cloud platform





# BSL NEW ENERGY (HONGKONG) CO.LIMITED

WIN-WIN | CHANGE | COOPERATION | INTEGRITY | RESPONSIBILITY



**EV**

**BATTERY  
WHY LITHIUM GOLF CART  
BATTERIES ARE THE FUTURE**

Nothing says you're dedicated to green energy and the environment like owning an electric vehicle for work or play. With an eco-friendly BSLBATT lithium iron phosphate (LiFePO<sub>4</sub>) battery, you can take your commitment a step further while enjoying reliable power that emits no gasses, fumes, or pollution.

**GREEN ENERGY THAT GO, GO, GOES.**

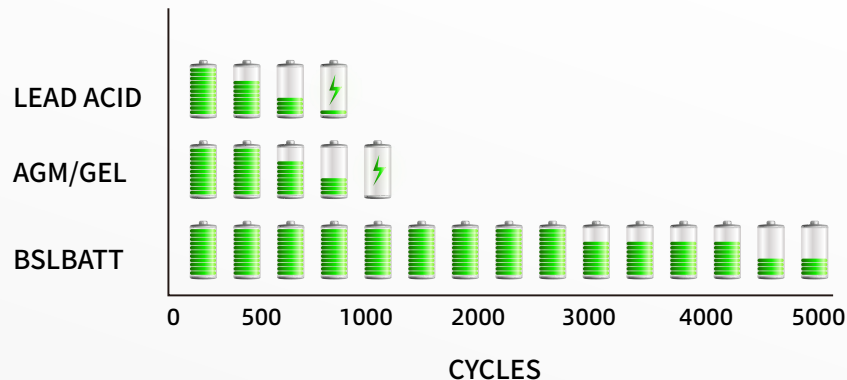






# Fuel Your Passion With Bslbatt Lithium Battery Technology

See the benefits of bslbatt lithium-ion batteries compared to lead acid and agm/gel  
Bslbatt lithium batteries can last up to 5000 cycles longer than the competition

**BSLBATT LITHIUM BATTERIES CAN LAST UP TO 5000 CYCLES LONGER THAN THE COMPETITION.**



## Five year cost comparison Between bslbatt & lead acid batteries

	YEAR 1	YEAR 2	YEAR 3	YEAR 4	YEAR 5	
	\$ Cost Of Battery	✂ Installation	⚙ Maintenance	⚙ Maintenance	⚙ Maintenance	🔍 Battery Charger
	\$\$\$\$	\$\$				
					<b>Total</b>	\$\$\$\$\$\$
	\$\$\$\$	\$	\$	\$	\$	\$
					<b>Total</b>	\$\$\$\$\$\$\$\$

## Bslbatt 48v vs lear-acid Golf car range by miles

	Standard 48V Lead Acid (Six at 8V or Four at 12V)	ONE BSLBATT Battery	Two BSLBATT Batteries	Three BSLBATT Batteries	Four BSLBATT Batteries	Five BSLBATT Batteries	Six BSLBATT Batteries
Miles	15-25	12-17	24-34	36-51	48-70	60-85	72-102

# QUALITY & RELIABILITY BASED ON INNOVATION



## Metal case



- A steel container 10mm thick.  
Separate input to charge and charge.
- Shockproof coating.

## LFP elements



- Steady discharge voltage.
- Life: Battery life exceeds 3000 cycles.
- Different temperature range.



## Charging connector

- For easy operation, there is a charging system.
- The battery takes 1 to 2 hours to charge.



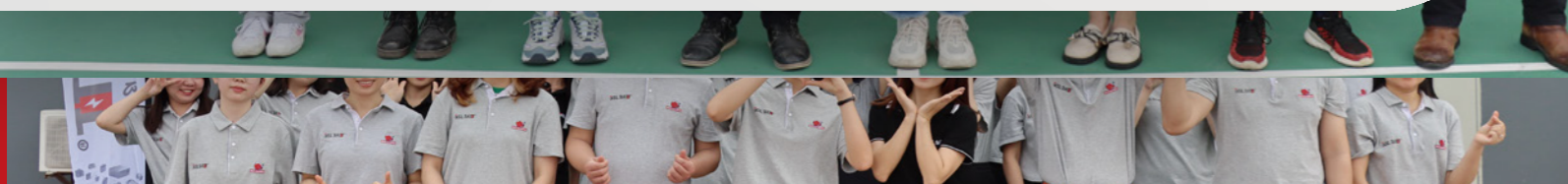
## Bench board

- Built-in Wi-Fi.
- Magnetic base has a bright display.
- Charge levels are accurate to 1%.
- Displays errors and warnings.



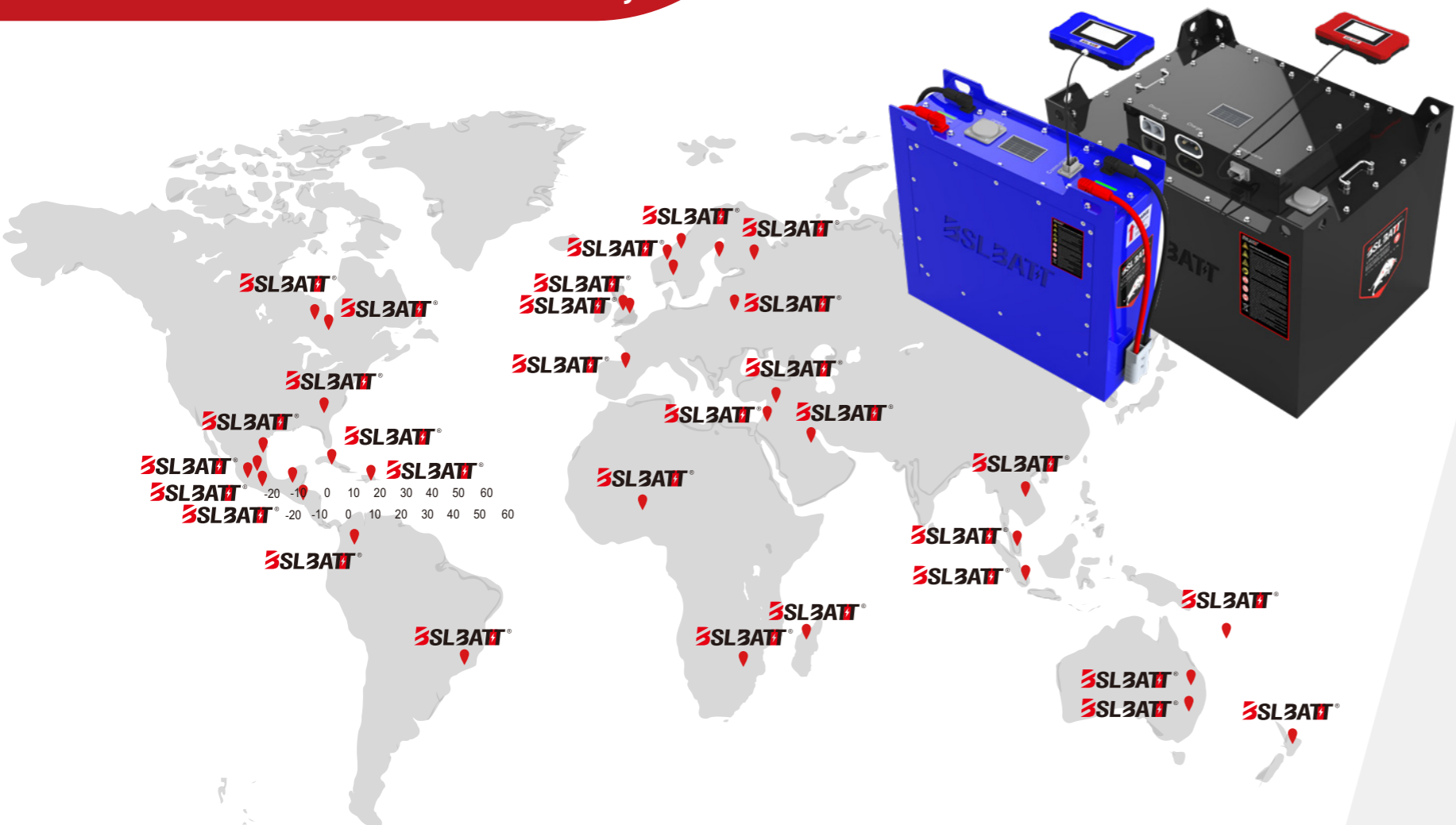


 Caparo Middle East  
 Po Box 17241  
 Jebel Ali Free Zone South, Dubai, UAE  
 Tel: +971 4 801 5300  
 Fax: +971 4 8831638  
 Email: [bala.p@caparomiddleeast.com](mailto:bala.p@caparomiddleeast.com)  
 [service@caparomiddleeast.com](mailto:service@caparomiddleeast.com)



Available At Local Dealers Across The Country

The most famous suppliers on the market chose BSLBATT LITHIUM



**BSLBATT LITHIUM.  
MORE ENERGY INSIDE.  
ONLY BSLBATT LITHIUM.**

